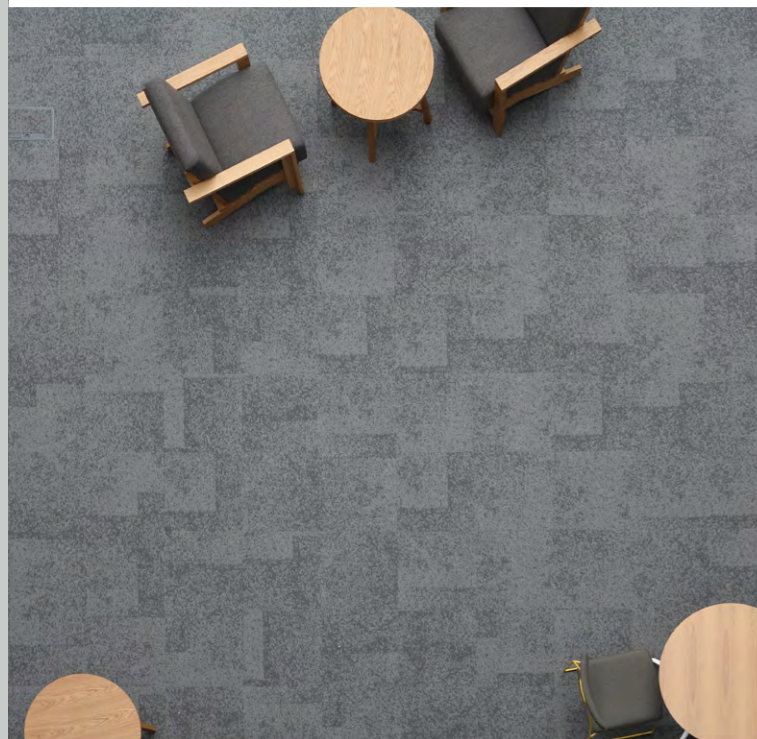




Product catalogue
Burmatex[®]
MANUFACTURERS OF CREATIVE FLOORING 



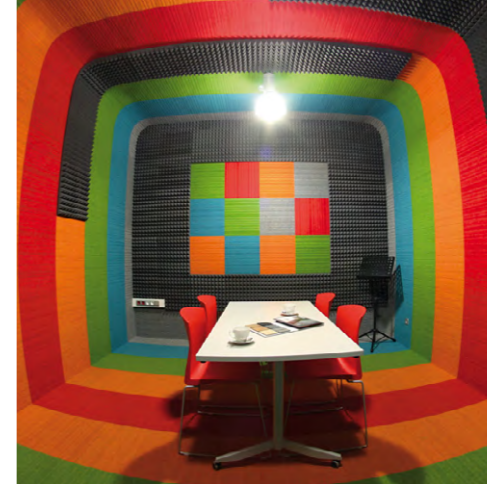
We are passionate about making our flooring products and aim to create truly inspirational environments for people to enjoy



burmatex® offers an expansive product range; our traditional fibre bonded sheet and tile ranges include entrance bonded products and ground-breaking structure bonded ranges, which present an expansive colour palette. Our multilevel loop, low level loop, textured loop and cut pile tufted carpet tile ranges, including a specialist entrance barrier product, are inspired by the latest and predicted future design and colour trends.



burmatex® is committed to best environmental practice in our manufacturing, from the sourcing of raw materials, including recycled content, minimising emission of CO₂ and reprocessing waste, use of green electricity and recycled packaging. Our product are now EPD verified by an independent third-party verification of the declaration and data, according to ISO 14025:2006.



We hope that by reading our catalogue and visiting our website at **www.burmatex.co.uk**, we will inspire you to work with us to create really unique, captivating floor designs.

burmatex® is a leading UK manufacturer of contract carpets and carpet tiles. We are passionate about creating truly inspirational environments, reflected in our products unique nature across both design and manufacture.

Our products are suitable for use in heavy contract markets and used in a wide variety of private and public sector buildings, including schools, offices, universities and leisure centres.

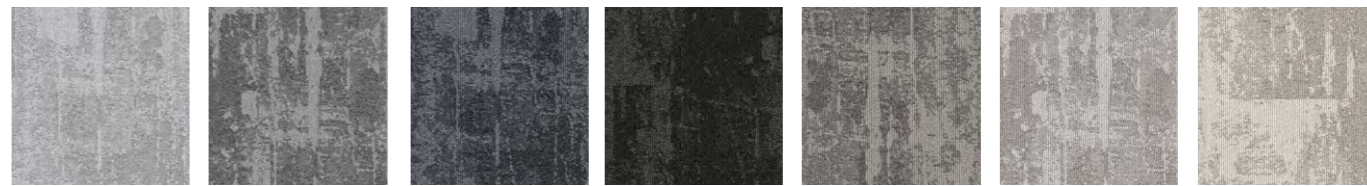


The **burmatex**® design team are a driving force in developing product ranges which reflect colour and design trends as well as creating exclusive, bespoke carpet tiles to meet customers' needs and providing our free planned flooring layout design service.

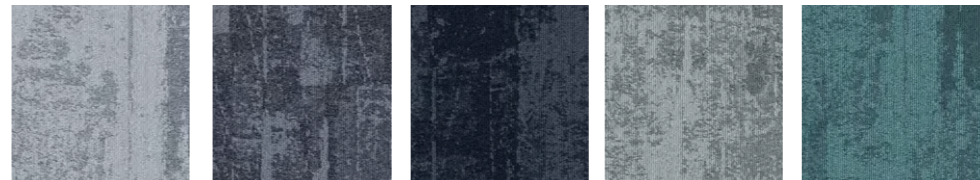


burmatex® is a BS EN ISO 9001:2000 registered company (Cert No.FM1440). All products are tested to BSI/CEN standards in relation to durability, wear, flame retardancy, antistatic properties and colour fastness.





34504 glacial grey tile
34604 glacial grey plank
34503 norse grey tile
34603 norse grey plank
34502 cool storm tile
34602 cool storm plank
34501 polar black tile
34601 polar black plank
34510 seal grey tile
34610 seal grey plank
34511 hail stone tile
34611 hail stone plank
34512 oslo fog tile
34612 oslo fog plank



34506 ice blue tile
34606 ice blue plank
34505 blue water tile
34605 blue water plank
34507 moonrise blue tile
34607 moonrise blue plank
34508 coastal mist tile
34608 coastal mist plank
34509 marine ravine tile
34609 marine ravine plank

Specification

Product Description: Carbon Neutral Multilevel Loop
Pile Yarn Description: Universal Fibers' Thrive' matter carbon negative recycled yarn
Tile Dimensions: 50 cm x 50 cm
Pile Height: 4.5mm
Total Thickness: 7mm
Pile Weight: 624g/m²
Tufts per m²: 26,771/m²
Castor Chair Rating: BS EN 985 Pass
Body Voltage Test: BS ISO 6356:2000 <2kV
Colour Fastness To Light: Minimum grade 6
Flammability: Euroclass Bfl-s1



arctic tile/plank

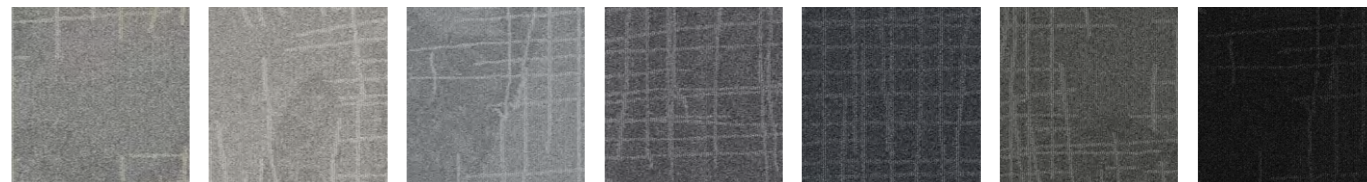
arctic is inspired by the changing landscape of the Arctic region. Organic lines cutting through icy rock, cold water flowing down frozen mountains and glacial river rapids inspire the movement in the design.

The colour palette consists of 12 colours inspired by the natural elements of the Arctic - ice blues and cool greys amongst soft subtle warms, with marine-like green tones to further enhance the collection.

arctic is available in both tile and plank, allowing you the freedom to express arctic in either option, creating unique structures and patterns to suit your project.

eco₂matters®

Made from Universal Fibers® Thrive® matter yarn, the world's first carbon negative recycled yarn, and our unique eco₂matters® BioBase™ recycled backing, **arctic** is carbon neutral. The design and 12 colour palette are inspired by the dramatic icy landscape of the arctic region we hope to help preserve.



31906 grey linen 31908 cotton canvas 31901 silk white 31902 silver pear 31903 after dark 31904 crushed cord 31905 liquorice lace



31910 golden slice 31911 minty mesh 31912 deep pistachio 31907 blue velvet 31909 satin sapphire

Specification

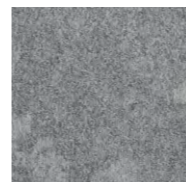
- Product Description:** Multilevel Loop
- Pile Yarn Description:** 100% Solution Dyed Nylon 6 (Polyamide-PA)
- Tile Dimensions:** 50 cm x 50 cm
- Pile Height:** 5mm
- Total Thickness:** 7.5 mm
- Pile Weight:** 774 g/m²
- Tufts per m²:** 250,393/m²
- Castor Chair Rating:** BS EN 985 Pass
- Body Voltage Test:** BS ISO 6356:2000 <2kV
- Colour Fastness To Light:** Minimum grade 6
- Flammability:** Euroclass Bfl-s1



vibe

vibe is inspired by torn netted structures with areas of strong pattern breaking away into sections of plain. Whilst the grid is the main feature of the design, underneath are subtle broken shapes created from torn and folded papers. This building of layers within the design creates a luxurious, velvet like appearance.

The vibrant palette of 12 colours provides colour on grey and tonal options. The four core greys make up the background to the colour on greys with the grid pattern taking the colour. From pastel tones to bright pops of highlight, is it suitable for all manner of interiors and installations.



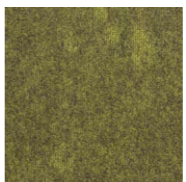
34301 silver gleam



34302 cool breeze



34303 grey zephyr



34304 golden hour



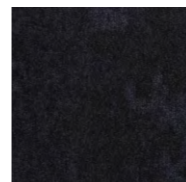
34305 spring seed



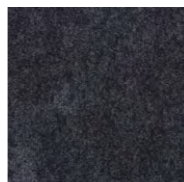
34306 airy celadon



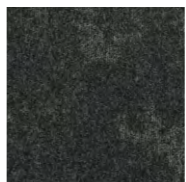
34307 luminous blue



34308 vivid navy



34309 midnight violet



34310 inky shade



34311 moonlit glow



34312 dark nimbus

Specification

- Product Description:** Multilevel Loop
- Pile Yarn Description:** 100% Solution Dyed Nylon 6 (Polyamide-PA)
- Tile Dimensions:** 50 cm x 50 cm
- Pile Height:** 5.2 mm
- Total Thickness:** 7.0 mm
- Pile Weight:** 678 g/m²
- Tufts per m²:** 236,220/m²
- Castor Chair Rating:** BS EN 985 Pass
- Body Voltage Test:** BS ISO 6356:2000 <2kV
- Colour Fastness To Light:** Minimum grade 6
- Flammability:** Euroclass Bfl-s1



dapple

dapple takes inspiration from walks in nature and the shaded light you see under a forest canopy. Think golden hours, wild woodlands, uneven shadows and gentle breezes.

dapple is a collection of 12 colours; warm, watery, cool and pure. Each colour is taken from outdoor experiences and environments. The palette reads as fresh, crisp and foraged.

The colour in dapple comes and goes, as light would dip in and out in a forest. This, paired with the organic pattern of the design, gives dapple a unique biophilic feel.



34201 silver pitch 34202 zinc facet 34203 grey horizon 34204 gold patina 34205 light angle 34206 sky tint 34207 blue facade



34208 coal layer 34209 clay screen 34210 metal edge 34211 green space 34212 ash profile

Specification

- Product Description:** Multilevel Loop
- Pile Yarn Description:** 100% Solution Dyed Nylon 6 (Polyamide-PA)
- Tile Dimensions:** 50 cm x 50 cm
- Pile Height:** 5 mm
- Total Thickness:** 7.5 mm
- Pile Weight:** 770 g/m²
- Tufts per m²:** 259,842/m²
- Castor Chair Rating:** BS EN 985 Pass
- Body Voltage Test:** BS ISO 6356:2000 <2kV
- Colour Fastness To Light:** Minimum grade 6
- Flammability:** Euroclass Bfl-s1



tiltnturn

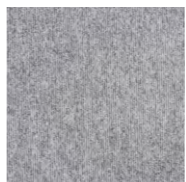
tiltnturn is a 770g product which reflects the amazing effects of light and shadow which surround us every day. The design and the colour palette are inspired by how light catches different planes within architectural structures, creating changing shadows and varying lines.



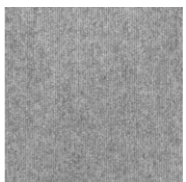
34001 steel tower



34002 warm frost



34003 concrete lead



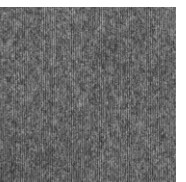
34004 granite vapour



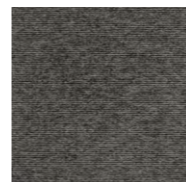
34005 city clay



34006 skylight beam



34011 twilight dawn



34008 urban nickel



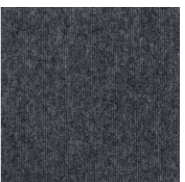
34010 sage vista



34007 harbour view



34009 river dew



34012 navy shore

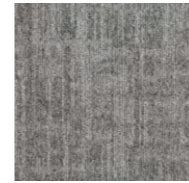
Specification

- Product Description:** Multilevel Loop
- Pile Yarn Description:** 100% Solution Dyed Nylon 6 (Polyamide-PA)
- Tile Dimensions:** 50 cm x 50 cm
- Pile Height:** 4.5 mm
- Total Thickness:** 7.0 mm
- Pile Weight:** 628 g/m²
- Tufts per m²:** 226,771/m²
- Castor Chair Rating:** BS EN 985 Pass
- Body Voltage Test:** BS ISO 6356:2000 <2kV
- Colour Fastness To Light:** Minimum grade 6
- Flammability:** Euroclass Bfl-s1



balance grade

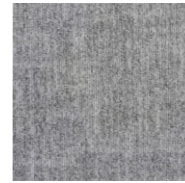
balance grade is inspired by misty Chicago mornings where the dew is fresh from Lake Michigan. It is a soft and subtle design which leaves a calming effect across the floor. It is complemented by the other two ranges in the balance collection: **balance grid** and **balance grade**



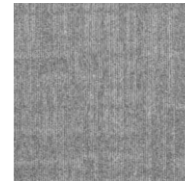
33901 steel grey



33902 warm dusk



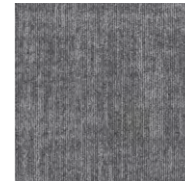
33903 concrete core



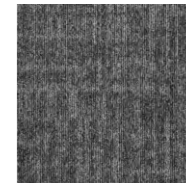
33904 granite mesh



33905 smoky clay



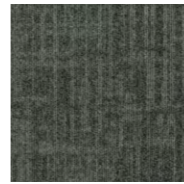
33906 skylight chrome



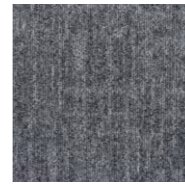
33911 twilight fog



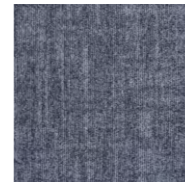
33908 black nickel



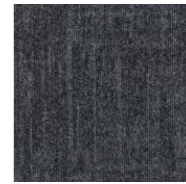
33910 sage glass



33907 harbour cloud



33909 river haze



33912 navy night

Specification

Product Description: Multilevel Loop

Pile Yarn Description: 100% Solution Dyed Nylon 6 (Polyamide-PA)

Tile Dimensions: 50 cm x 50 cm

Pile Height: 4.5 mm

Total Thickness: 7.0 mm

Pile Weight: 628 g/m²

Tufts per m²: 226,771/m²

Castor Chair Rating: BS EN 985 Pass

Body Voltage Test: BS ISO 6356:2000 <2kV

Colour Fastness To Light: Minimum grade 6

Flammability: Euroclass Bfl-s1



balance grid

balance grade is inspired by the strong lines seen in high rise skyscrapers, shining and gleaming. It is a classic yet contemporary design which works alone or paired with the other two designs in the balance collection: **balance grid** and **balance grade**



34101 steel



34102 warm



34103 concrete



34104 granite



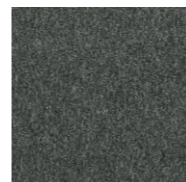
34105 clay



34106 skylight



34108 nickel



34111 twilight



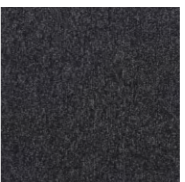
34110 sage



34107 harbour



34109 river



34112 navy

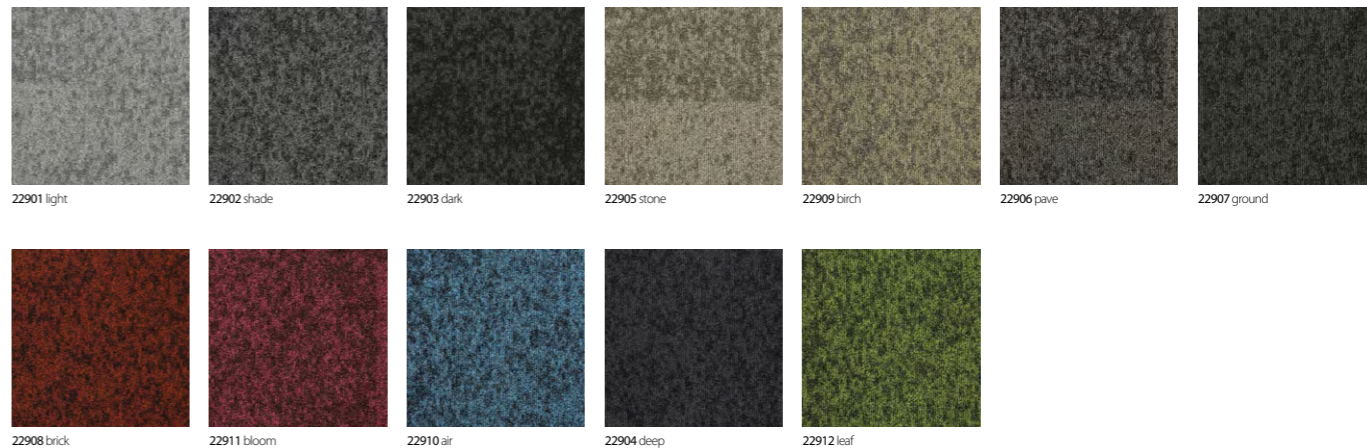
Specification

- Product Description:** Multilevel Loop
- Pile Yarn Description:** 100% Solution Dyed Nylon 6 (Polyamide-PA)
- Tile Dimensions:** 50 cm x 50 cm
- Pile Height:** 4.5 mm
- Total Thickness:** 7.0 mm
- Pile Weight:** 628 g/m²
- Tufts per m²:** 226,771/m²
- Castor Chair Rating:** BS EN 985 Pass
- Body Voltage Test:** BS ISO 6356:2000 <2kV
- Colour Fastness To Light:** Minimum grade 6
- Flammability:** Euroclass Bfl-s1



balance ground

balance grade is inspired by the rough texture of sidewalks and pavements that run throughout the city of Chicago. It is strong in tactile elements but soft in colour, designed to give your space some breathing room. When used in conjunction with **balance grid** and **balance grade** it is grounding and neutral.



Specification

- Product Description:** Multilevel Loop
- Pile Yarn Description:** 100% Solution Dyed Aquafil Econyl® Nylon (Polyamide-PA)
- Tile Dimensions:** 50 cm x 50 cm
- Pile Height:** 5 mm
- Total Thickness:** 7.5 mm
- Pile Weight:** 910 g/m²
- Tufts per m²:** 236,220/m²
- Castor Chair Rating:** BS EN 985 Pass
- Body Voltage Test:** BS ISO 6356:2000 <2kV
- Colour Fastness To Light:** Minimum grade 6
- Flammability:** Euroclass Bfl-s1



rainfall

rainfall's inspiration was trying to capture those first moments of a summer storm. The first spots of rain punctuate the surface, gathering in intensity until the whole colour is several shades darker.

This multilevel loop product encompasses changes of tone in varying proportions throughout, resulting in an all over effect of subtlety combined with soft angles.

These characteristics ensure that each installation of appears slightly different from the last. An enticing palette of 12 colours provides bright and light options, through to more concentrated and atmospheric tones, suitable for all manner of installations and interiors.



22801 haiku



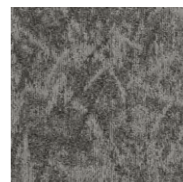
22802 sesame



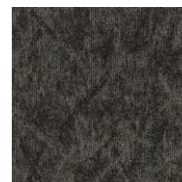
22803 sumi



22809 mochi



22805 arashi



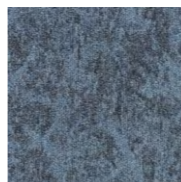
22806 yari



22810 matcha



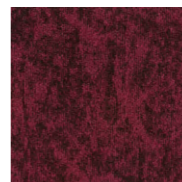
22808 inkpot



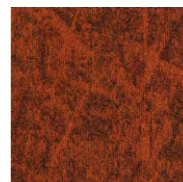
22807 fuji



22811 orchid



22812 sakura



22804 lantern

Specification

Product Description: Multilevel Loop

Pile Yarn Description: 100% Solution Dyed Nylon (Polyamide-PA)

Tile Dimensions: 50 cm x 50 cm

Pile Height: 5 mm

Total Thickness: 7.5 mm

Pile Weight: 795 g/m²

Tufts per m²: 226,771/m²

Castor Chair Rating: BS EN 985 Pass

Body Voltage Test: BS ISO 6356:2000 <2kV

Colour Fastness To Light: Minimum grade 6

Flammability: Euroclass Bfl-s1

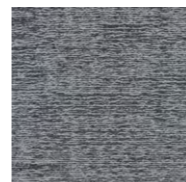


osaka

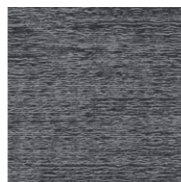
inspired by clashes in Japanese culture; new and old, warm and cool, urban and natural - **osaka** is a collection of contrasts that work seamlessly together.

The design's pattern (originally from a map of Osaka) can be interpreted in a multitude of ways; geometric and inspired by the traditional practise of origami, or organic and reminiscent of a bamboo forest floor.

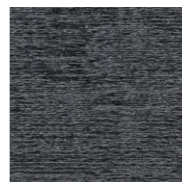
The abstract nature of the design, teamed with a diverse colour palette, allows it to be both soft and strong, expertly working with any modern interior space.



22201 ice



22202 ridge



22203 point



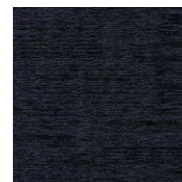
22204 north



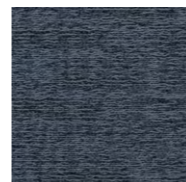
22205 moose



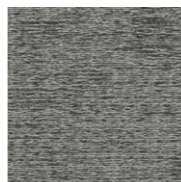
22206 anchor



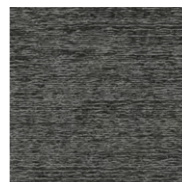
22207 creek



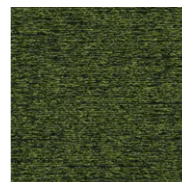
22208 lake



22209 husky



22210 wolf



22211 spruce



22212 valley

Specification

- Product Description:** Multilevel Loop
- Pile Yarn Description:** 100% Solution Dyed Aquafil Econyl® Nylon (Polyamide-PA)
- Tile Dimensions:** 50 cm x 50 cm
- Pile Height:** 5 mm
- Total Thickness:** 7.5 mm
- Pile Weight:** 800 g/m²
- Tufts per m²:** 226,771/m²
- Castor Chair Rating:** BS EN 985 Pass
- Body Voltage Test:** BS ISO 6356:2000 <2kV
- Colour Fastness To Light:** Minimum grade 6
- Flammability:** Euroclass Bfl-s1



alaska

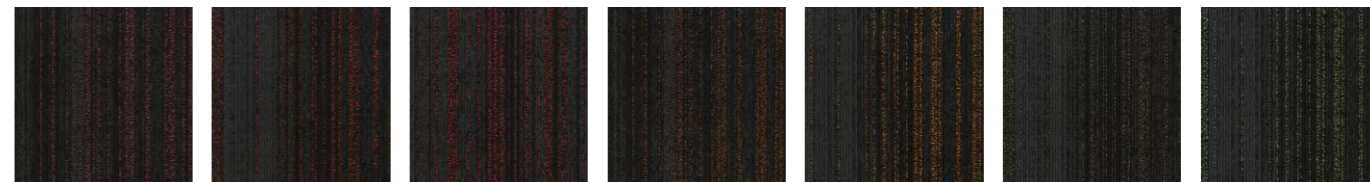
alaska is our first multilevel loop product and its name was also our inspiration.

A concise palette of twelve colours in this 800g product, combined with the tactile and textural finish, all relate to the invigorating outdoors of this beautiful state. This enables the creation of nature-inspired flooring schemes, while not excluding the possibility of a more classic effect.

Used alone, or in combination with other burmatex ranges such as **grade, axis** and **hadron, alaska** brings an additional layer of flexibility and creativity to our constantly evolving product portfolio.



21601 titanium 21615 ash 21603 sparkler 21616 arctic 21610 clay 21604 firefly 21608 moss



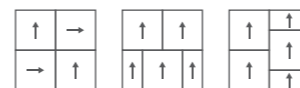
21607 flamingo 21605 crimson 21612 raspberry 21613 rust 21606 papaya 21611 starling 21609 mint



21614 violet 21602 cerulean 21617 electric

Specification

- Product Description:** Textured Loop Pile
- Pile Yarn Description:** 100% Solution Dyed Nylon 6,6 (Polyamide-PA)
- Tile Dimensions:** 50 cm x 50 cm
- Pile Height:** 3.5 mm
- Total Thickness:** 6.5 mm
- Pile Weight:** 800 g/m²
- Tufts per m²:** 177,165/m²
- Castor Chair Rating:** BS EN 985 Pass
- Body Voltage Test:** BS ISO 6356:2000 <2kV
- Colour Fastness To Light:** Minimum grade 6
- Flammability:** Euroclass Bfl-s1



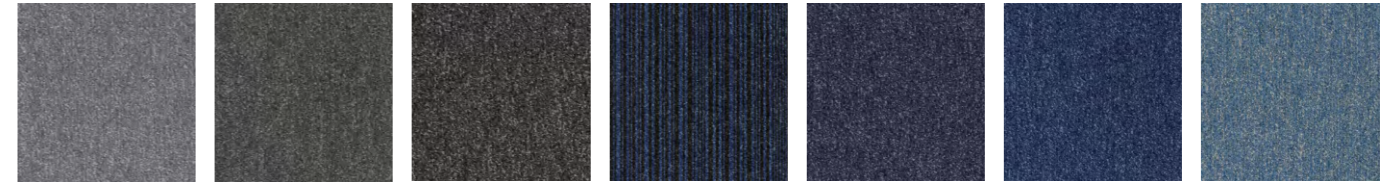
hadron

hadron is highly inspired by striking imagery of the hadron collider. Hyper-real bright bursts of colour, surround by dark space. Each colour-way from the collection has the same neutral, dark grey base, making it easy to delineate areas without harsh lines and creating seamless transitions across a floor. A variety of highlight colours are used, from intense pops of colour to mid tones, neutrals and semi-darks.

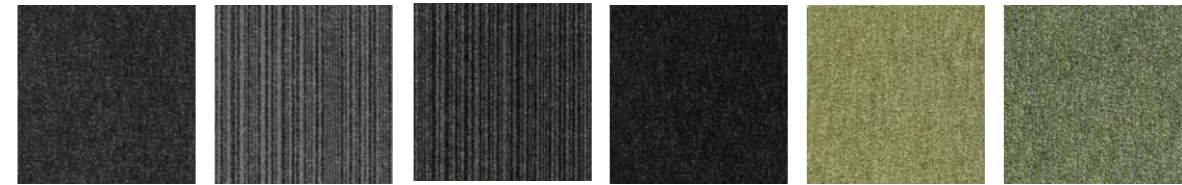
The inclusion of texture on this carpet tile, in a subtle weft style pattern, enhances the dispersed nature of the colours.



21813 light beige 21814 medium beige 21815 dark beige 21915 dark beige stripe 21819 orange 21820 red 21821 purple



21817 light grey 21803 medium grey 21816 metal grey 21906 sea blue stripe 21822 deep blue 21806 sea blue 21810 sky blue



21802 coal grey 21902 coal grey stripe 21903 medium grey stripe 21801 jet black 21811 green 21818 moss green



go to is low carbon

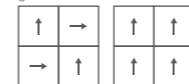


go to uses EgoCycle® 75 recycled yarn

Specification

Product Description: **Low Carbon** Level Loop
 Pile Yarn Description: **EgoCycle® 75 recycled** solution dyed nylon
 Tile Dimensions: 50 cm x 50 cm
 Pile Height: 3.0 mm
 Total Thickness: 5.5 mm
 Pile Weight: 500 g/m²
 Tufts per m²: 196,850/m²
 Castor Chair Rating: BS EN 985 Pass
 Body Voltage Test: BS ISO 63562:2000 <2kV
 Colour Fastness To Light: Minimum grade 6
 Flammability: Euroclass Bfl-s1

go to



go to stripe

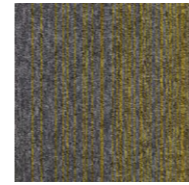


go to

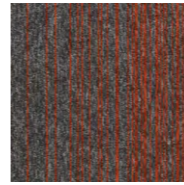
go to uses **EgoCycle® 75 recycled** solution dyed nylon. This, combined with our **BioBase™ recycled** backing produces a **low carbon** update to this reliable product range.

go to offers two designs, sixteen plains and four stripe options. The range of colours has been increased to create this attractively practical, versatile and flexible palette.

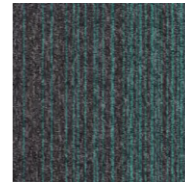
go to has a proven track record of high performance and resilience that **Burmatex®** carpet tiles are known for. This core level loop range is the go to choice for use



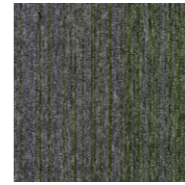
32701 south beach tile
32901 south beach plank



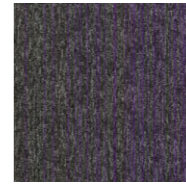
32702 palm springs tile
32902 palm springs plank



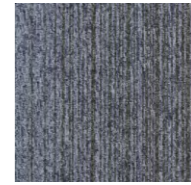
32703 ocean drive tile
32903 ocean drive plank



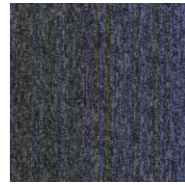
32705 turtle bay tile
32905 turtle bay plank



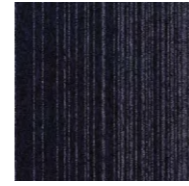
32704 havana town tile
32904 havana town plank



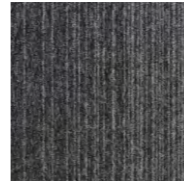
32710 icelandic isle tile
32910 icelandic isle plank



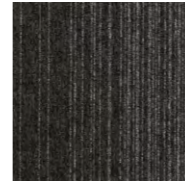
32711 nordic fjord tile
32911 nordic fjord plank



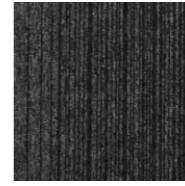
32708 bergen city tile
32908 bergen city plank



32712 polar drift tile
32912 polar drift plank



32707 baffin island tile
32907 baffin island plank



32713 galapagos bay tile
32913 galapagos bay plank



32706 bora bora tile
32906 bora bora plank

Specification

Product Description: Low Level Loop

Pile Yarn Description: 100% Solution Dyed Nylon (Polyamide-PA)

Tile Dimensions: 50 cm x 50 cm, 25 cm x 100 cm

Pile Height: 4 mm

Total Thickness: 6.5 mm

Pile Weight: 600 g/m²

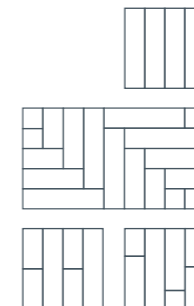
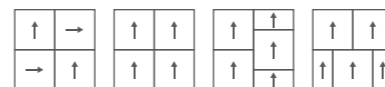
Tufts per m²: 196,500/m²

Castor Chair Rating: BS EN 985 Pass

Body Voltage Test: BS ISO 6356:2000 <2kV

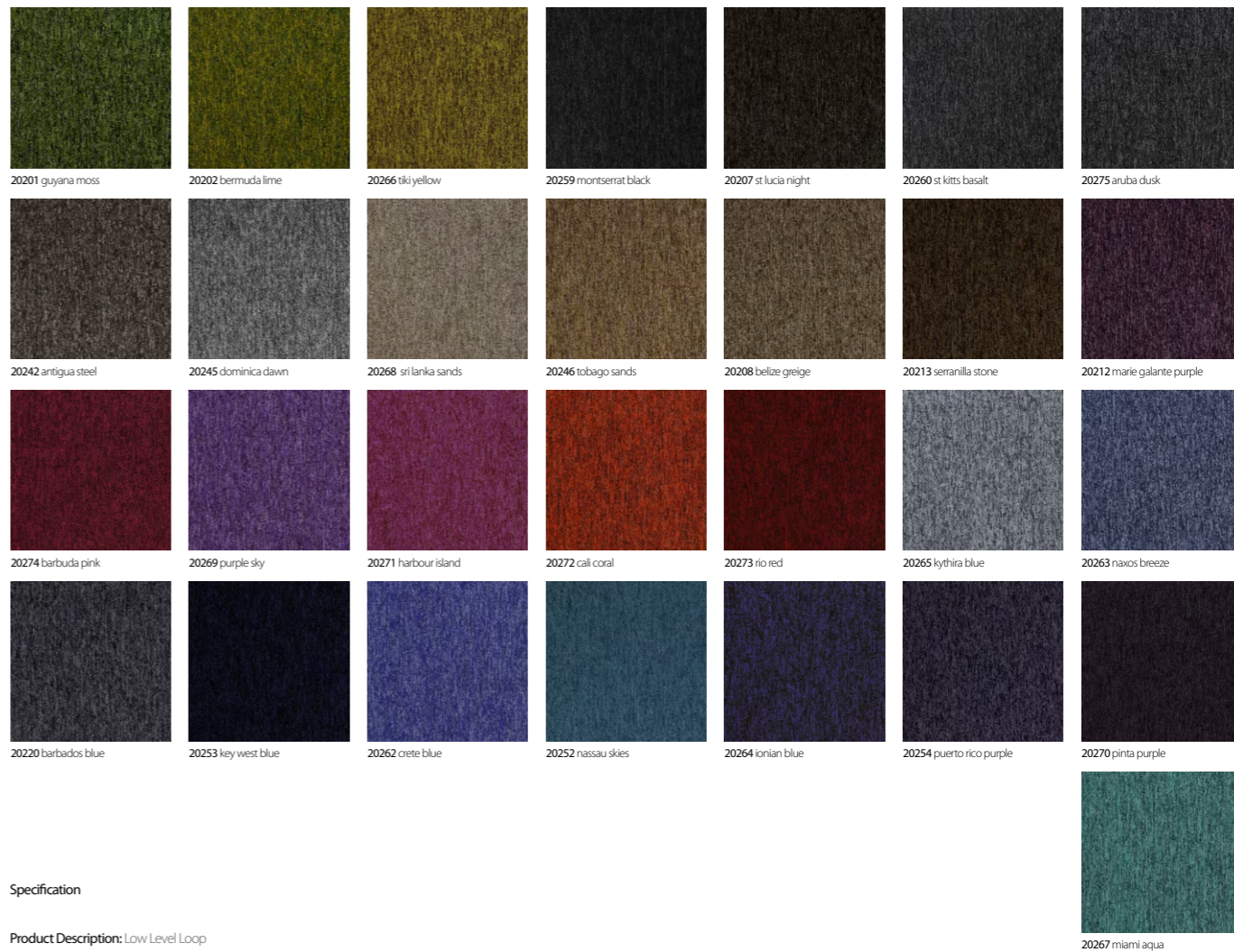
Colour Fastness To Light: Minimum grade 6

Flammability: Euroclass Bfl-s1



tivoli mist tile/plank

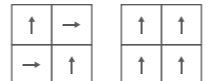
tivoli mist offers a flexible range of commercial carpet tiles, designed to provide creativity, colour and individuality. With colour pairings that blend seamlessly together, **tivoli mist** affords the possibility of transitioning from one zoned area to another without the use of hard lines.



loop pile

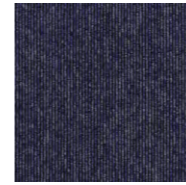
Specification

- Product Description:** Low Level Loop
- Pile Yarn Description:** 100% Solution Dyed Nylon (Polyamide-PA)
- Tile Dimensions:** 50 cm x 50 cm
- Pile Height:** 4 mm
- Total Thickness:** 6.5 mm
- Pile Weight:** 600 g/m²
- Tufts per m²:** 196500/m²
- Castor Chair Rating:** BS EN 985 Pass
- Body Voltage Test:** BS ISO 6356:2000 <2kV
- Colour Fastness To Light:** Minimum grade 6
- Flammability:** Euroclass Bfl-s1

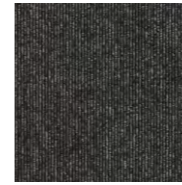


tivoli tile

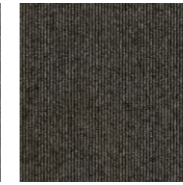
tivoli presents a high performance loop pile (class 33) product offering, made with 100% solution dyed nylon and including **tivoli**, **tivoli online** and **tivoli multiline**.



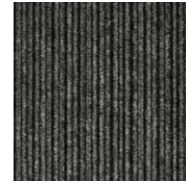
online
20607 aegean sea



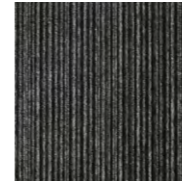
online
20608 haiti haze



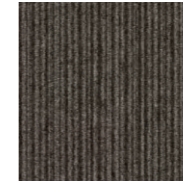
online
20609 perissa sand



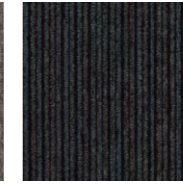
multiline
20703 melanesia grey



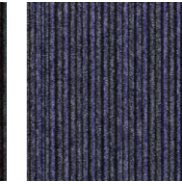
multiline
20707 tenerife black



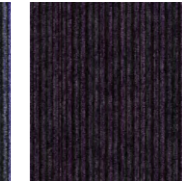
multiline
20711 seychelles beige



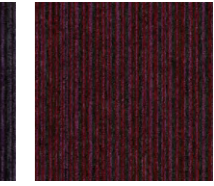
multiline
20709 mediterranean topaz



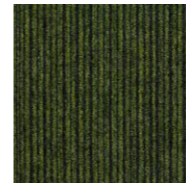
multiline
20708 santorini blue



multiline
20712 cayman purple



multiline
20713 takutea red



multiline
20710 everglade green

Specification

Product Description: Low Level Loop

Pile Yarn Description: 100% Solution Dyed Nylon (Polyamide-PA)

Tile Dimensions: 50 cm x 50 cm

Pile Height: 4 mm

Total Thickness: 6.5 mm

Pile Weight: 600 g/m²

Tufts per m²: 196,500m²

Castor Chair Rating: BS EN 985 Pass

Body Voltage Test: BS ISO 6356:2000 <2kV

Colour Fastness To Light: Minimum grade 6

Flammability: Euroclass Bfl-s1

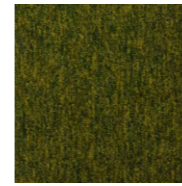


tivoli tile (cont.)

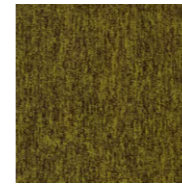
Varied plain, **tivoli**, classic pinstripe, **tivoli online** and contemporary striped, **tivoli multiline**, designs can be used individually or in a bespoke arrangement, with the expansive, modern colour palette enabling classic, neutral schemes or innovative, creative layouts.



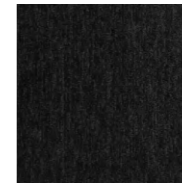
21101 guayana moss



21102 bermuda lime



21166 tiki yellow



21159 montserrat black



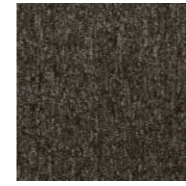
21160 st kitts basalt



21107 st lucia night



21175 aruba dusk



21142 antigua steel



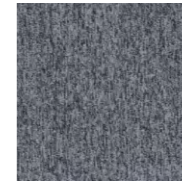
21145 dominica dawn



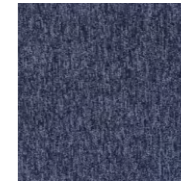
21168 sri lanka sands



21108 belize greige



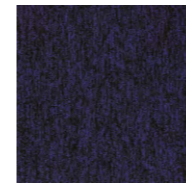
21165 lythira blue



21163 navos breeze



21120 barbados blue



21164 ionian blue



21152 nassau skies



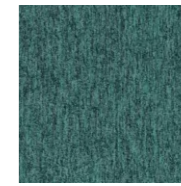
21153 key west blue



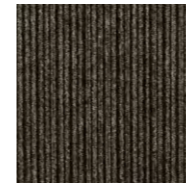
21169 purple sky



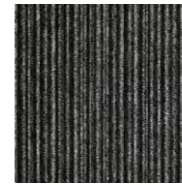
21172 cali coral



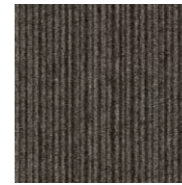
21167 miami aqua



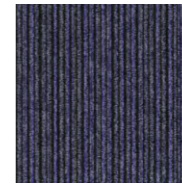
multiline
20703 melanesia grey



multiline
20707 tenerife black



multiline
21211 seychelles beige



multiline
21208 santorini blue



multiline
21212 cayman purple



multiline
21209 mediterranean topaz

Specification

Product Description: Low Level Loop

Pile Yarn Description: 100% Solution Dyed Nylon (Polyamide-PA)

Tile Dimensions: 25 cm x 100 cm

Pile Height: 4 mm

Total Thickness: 6.5 mm

Pile Weight: 600 g/m²

Tufts per m²: 196,500/m²

Castor Chair Rating: BS EN 985 Pass

Body Voltage Test: BS ISO 6356:2000 <2kV

Colour Fastness To Light: Minimum grade 6

Flammability: Euroclass Bfl-s1



tivoli plank

tivoli carpet planks offer two loop pile designs – a solid colour **tivoli** and a stripe **tivoli multiline**. The colour selection creates a broad palette with complementary colours across the two designs developing creative installation options.

tivoli carpet planks are made with 100% solution dyed nylon and are suitable for heavy commercial use (class 33).



1834 soap stone



1891 pewter cloud



1805 diamond dust



1803 concrete jungle



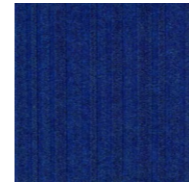
1802 zinc asphalt



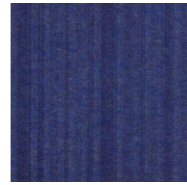
1801 carbon steel



1809 ink stone



1814 blue monday



1813 lavender oil



1890 purple emperor



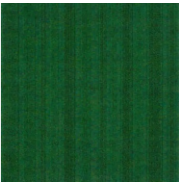
1886 pink diamond



1812 indigo snake



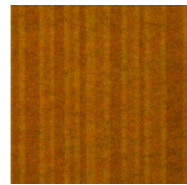
1882 turquoise mountain



1883 emerald coast



1830 lime street



1887 gold quest



1839 mandarin duck



1845 scarlet runner

Specification

Product Description: Structure Bonded®

Pile Yarn Description: 85% Polypropylene 15% Nylon

Tile Dimensions: 50 cm x 50 cm

Total Thickness: 7.8 mm

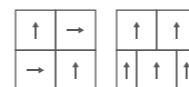
Pile Weight: 950 g/m²

Castor Chair Rating: BS EN 985 Pass

Body Voltage Test: BS ISO 6356:2000 <2kV

Colour Fastness To Light: Minimum grade 6

Flammability: Euroclass Bfl-s1

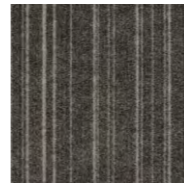


lateral®

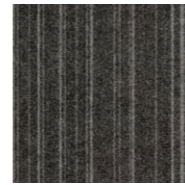
lateral® is the definitive product offering for all commercial interiors, schools, public buildings, residential schemes and design and build projects. **lateral's** 'ground-breaking' design stems from our innovative, structure bonded manufacturing technology using an unusual mix of textures from cut through to loop pile. It is available in a range of 18 colours.



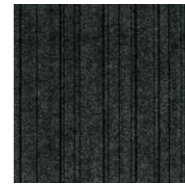
12912 cool stone



12926 pewter track



12930 diamond coal



12906 metal shock



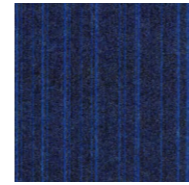
12928 night suede



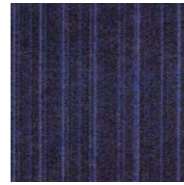
12929 pitch black



12923 ink film



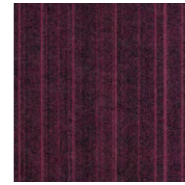
12927 blue reef



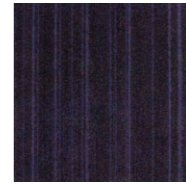
12924 lavender seed



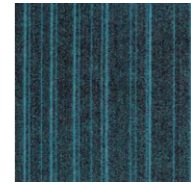
12920 deep purple



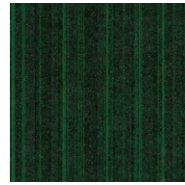
12916 pink panther



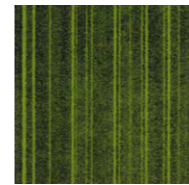
12931 indigo stack



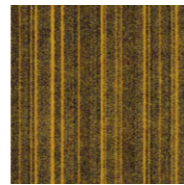
12922 turquoise opal



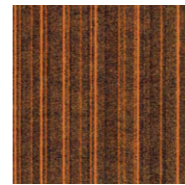
12925 emerald city



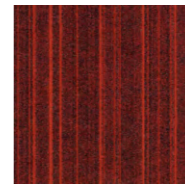
12902 lime zest



12918 rolled gold



12901 sun burst



12904 scarlet fever

Specification

Product Description: Structure Bonded®

Pile Yarn Description: 85% Polypropylene 15% Nylon

Tile Dimensions: 50 cm x 50 cm

Total Thickness: 8.0 mm

Pile Weight: 1000 g/m²

Castor Chair Rating: BS EN 985 Pass

Body Voltage Test: BS ISO 6356:2000 <2kV

Colour Fastness To Light: Minimum grade 6

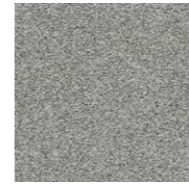
Flammability: Euroclass Bfl-s1



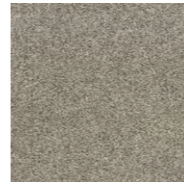
code

code is the next generation in structure-bonded® design, evolving from the technology that created lateral®.

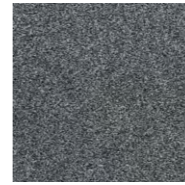
code uses subtle contrasting stripes of colour and texture for a stylish defined look. Combine **code** with zip and lateral® to produce a unique floor design.



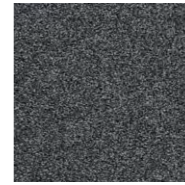
33201 cloud



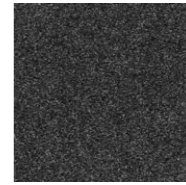
33202 pearl



33203 pebble



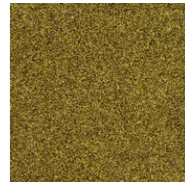
33204 shale



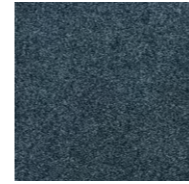
33205 mussel



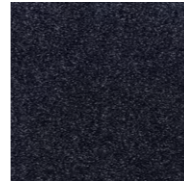
33206 gull



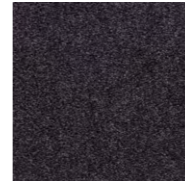
33207 gorse



33208 surf



33209 wave



33210 heather

Specification

Product Description: Cut Pile

Pile Yarn Description: 100% Solution Dyed Aquafil Econyl® Nylon (Polyamide-PA)

Tile Dimensions: 50 cm x 50 cm

Pile Height: 7 mm

Total Thickness: 9.5 mm

Pile Weight: 1300 g/m²

Tufts per m²: 1 653 354/m²

Castor Chair Rating: BS EN 985 Pass

Body Voltage Test: BS ISO 6356:2000 <2kV

Colour Fastness To Light: Minimum grade 6

Flammability: Euroclass Bfl-s1



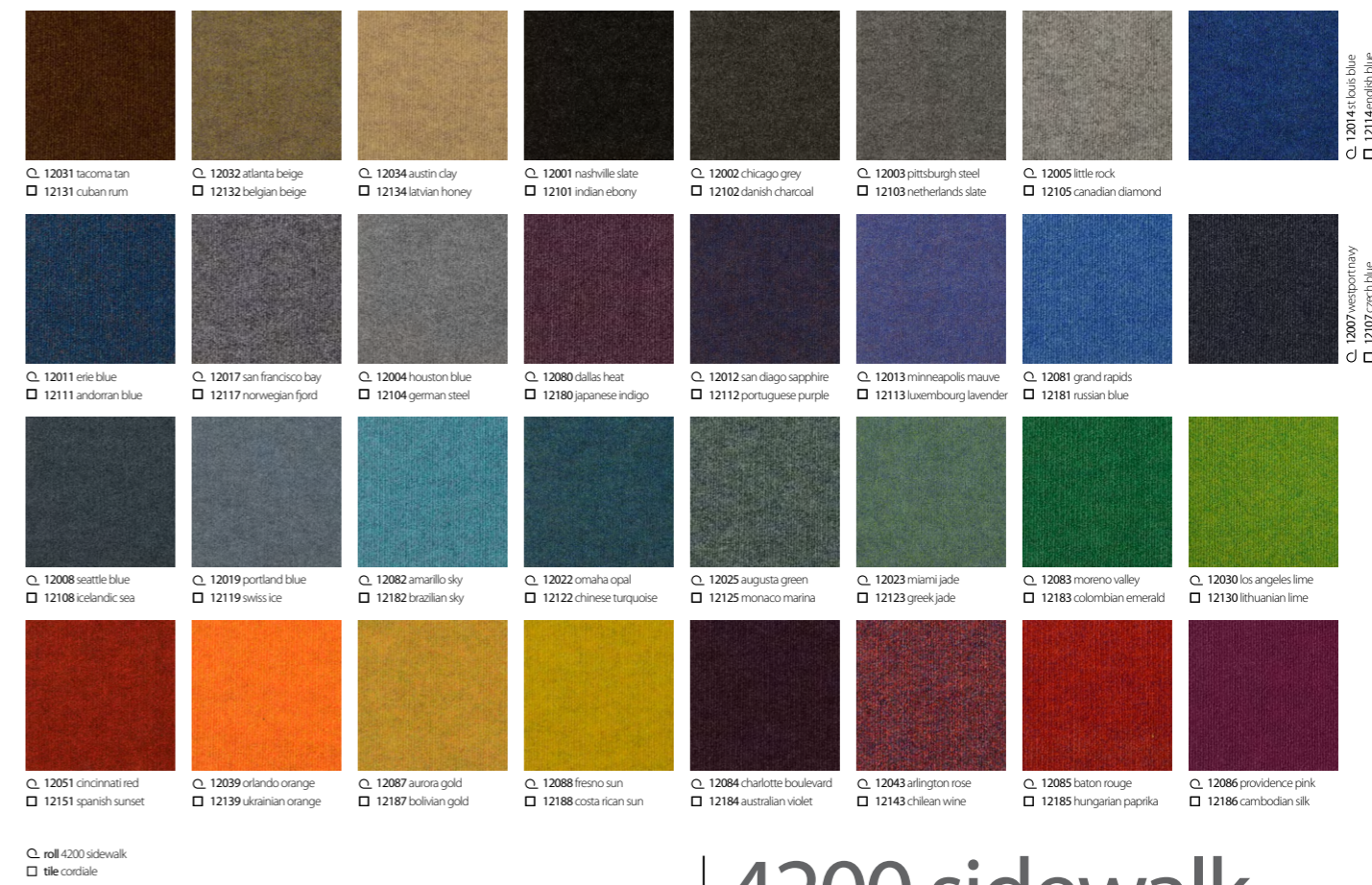
origin

origin is a sophisticated and plush range, working as a stand-alone product as well as with other carpet tiles in our collection, such as **osaka**, **rainfall** and **alaska**.

The new colouration of **origin** was inspired by coastal themes and forecasted colour trends. Organic and natural, the colour palette is usable, classic and clean. Looking to the colour names chosen, you can clearly see the oceanic inspiration: fresh and crisp surf, deep and dramatic wave, smooth pebble and atmospheric cloud, to name a few in the palette of 10.



Huddle area



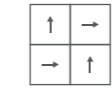
roll 4200 sidewalk
tile cordiale

Specification C

Product Description: Fibre Bonded
Pile Yarn Description: 85% Polypropylene 15% Nylon
Roll Length: 30m
Roll Width: 2m
Total Thickness: 6.0 mm
Total Weight: 950 g/m²
Castor Chair Rating: BS EN 985 Pass
Body Voltage Test: BS ISO 6356:2000 <2kV
Colour Fastness To Light: Minimum grade 6
Flammability: Euroclass EF-s1*
 *200m² minimum order quantity for Cf1-s1 rating

Specification □

Product Description: Fibre Bonded
Pile Yarn Description: 85% Polypropylene 15% Nylon
Tile Dimensions: 50 cm x 50 cm
Total Thickness: 7.8 mm
Pile Weight: 950 g/m²
Castor Chair Rating: BS EN 985 Pass
Body Voltage Test: BS ISO 6356:2000 <2kV
Colour Fastness To Light: Minimum grade 6
Flammability: Euroclass BF-s1



4200 sidewalk

4200 sidewalk is an extremely durable fine ribbed fibre bonded carpet sheet. It is ideally suited for schools, public buildings and commercial offices. Made from a high performance mix of solution dyed fibres, it is available in a range of 32 vibrant colours.

cordiale

cordiale is an extremely durable fine ribbed fibre bonded carpet tile. It is ideally suited for schools, public buildings and commercial offices. Made from a high performance mix of solution dyed fibres, it is available in a range of 32 vibrant colours.



- 11531 buffalo brown
 11532 harlem beige
 11534 rockland stone
 11501 edison slate
 11502 oregon grey
 11503 lexington grey
 11505 waldorf grey
 11514 virginia blue
- 11831 rishworth brown
 11832 buckingham beige
 11834 hereford stone
 11801 sedburgh slate
 11802 gresham grey
 11803 gordonstoun grey
 11805 sherborne grey
 11814 oriel blue
- 11511 newark blue
 11517 bowery blue
 11504 staten steel
 11580 dutchess purple
 11512 bergen sapphire
 11513 new york mauve
 11581 richmond blue
 11507 montana blue
- 11811 repton blue
 11817 winchester blue
 11804 durham steel
 11880 exeter indigo
 11812 stamford sapphire
 11813 malvern mauve
 11881 strathallan blue
 11807 kings navy
- 11508 hudson blue
 11519 new haven blue
 11582 long island sky
 11522 washington jade
 11525 madison marine
 11523 newburgh jade
 11583 litchfield green
 11530 colorado lime
- 11808 marlborough blue
 11819 bradfield blue
 11882 dover teal
 11822 harrow green
 11825 rossall jade
 11823 monmouth moss
 11883 ackworth green
 11830 loretto lime
- 11551 saratoga red
 11539 florida flame
 11587 westchester gold
 11588 syracuse sun
 11584 queens purple
 11543 texas rose
 11585 cortland rouge
 11586 trenton pink
- 11851 rugby red
 11839 oundle orange
 11887 epsom gold
 11888 kingsmead gold
 11884 wellington purple
 11843 keble rose
 11885 rougemont red
 11886 dulwich pink

- roll 4200 sidewalk
- tile cordiale

Specification

Product Description: Fibre Bonded
Pile Yarn Description: 85% Polypropylene 15% Nylon
Roll Length: 30m
Roll Width: 2m
Total Thickness: 6.5 mm
Total Weight: 975 g/m²
Castor Chair Rating: BS EN 985 Pass
Body Voltage Test: BS ISO 6356:2000 <2kV
Colour Fastness To Light: Minimum grade 6
Flammability: Euroclass EF-s1*

*200m2 minimum order quantity for Cfl-s1 rating

Specification

Product Description: Fibre Bonded
Pile Yarn Description: 85% Polypropylene 15% Nylon
Tile Dimensions: 50 cm x 50 cm
Total Thickness: 7.8 mm
Pile Weight: 975 g/m²
Castor Chair Rating: BS EN 985 Pass
Body Voltage Test: BS ISO 6356:2000 <2kV
Colour Fastness To Light: Minimum grade 6
Flammability: Euroclass Bfl-s1



4400 broadway

4400 broadway is an extremely durable broad ribbed fibre bonded carpet sheet and is particularly suited for public buildings, such as schools, and other commercial interiors. Made from a high performance mix of solution dyed fibres, it is available in a wide range of 32 exciting colourways.

academy

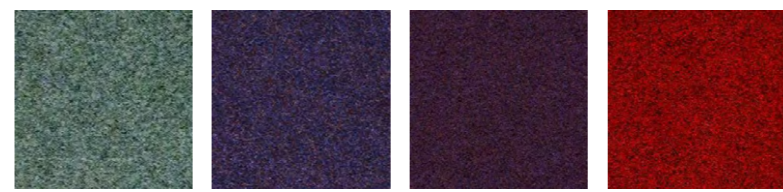
academy is an extremely durable broad ribbed fibre bonded carpet tile and is particularly suited for public buildings, such as schools, and other commercial interiors. Made from a high performance mix of solution dyed fibres, it is available in a wide range of 32 exciting colourways.



6070 yakama slate 6040 armenian grey 6050 norman steel 6023 iceni blue 6060 barona blue 6081 bavarian blue 6028 saxon blue



6056 spartan mauve 6061 skydancer 6036 phoenician green 6083 norse green 6045 trojan green 6055 dorian azure 6082 mayan sky



6022 assyrian jade 6066 navajo mauve 6090 persian purple 6062 red lake

Specification

Product Description: Fibre Bonded
Pile Yarn Description: 85% Polypropylene 15% Nylon
Roll Length: 30m
Roll Width: 2m
Total Thickness: 6.5 mm
Total Weight: 1150 g/m²
Castor Chair Rating: BS EN 985 Pass
Body Voltage Test: BS ISO 6356:2000 <2kV
Colour Fastness To Light: Minimum grade 6
Flammability: Euroclass EF-s1

Specification

Product Description: Fibre Bonded
Pile Yarn Description: 85% Polypropylene 15% Nylon
Tile Dimensions: 50 cm x 50 cm
Total Thickness: 10 mm
Pile Weight: 1200 g/m²
Castor Chair Rating: BS EN 985 Pass
Body Voltage Test: BS ISO 6356:2000 <2kV
Colour Fastness To Light: Minimum grade 6
Flammability: Euroclass BF-s1

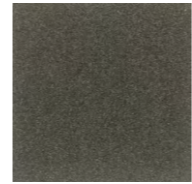


5500 luxury

5500 is an extremely durable fibre bonded carpet sheet, ideally suited for public buildings, such as schools, and other commercial interiors. Made from a high performance mix of solution dyed fibres, it is available in a choice of 18 attractive colourways.

velour excel

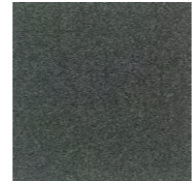
velour excel is an extremely durable fibre bonded carpet tile, ideally suited for public buildings, such as schools, and other commercial interiors. Made from a high performance mix of solution dyed fibres, it is available in a choice of 18 attractive colourways.



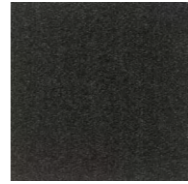
18701 graphite



18702 graphite stripe



18704 sterling



18705 sterling stripe



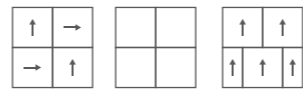
18707 cobalt



18708 cobalt stripe

Specification

- Product Description:** Performance Barrier System
- Pile Yarn Description:** 100% Solution Dyed Nylon (Polyamide-PA)
- Tile Dimensions:** 50 cm x 50 cm
- Total Thickness:** 10.0 mm
- Pile Weight:** 920 g/m²
- Tufts per m²:** 110,236/m²
- Castor Chair Rating:** BS EN 985 Pass
- Body Voltage Test:** BS ISO 6356:2000 <2KV
- Colour Fastness To Light:** Minimum grade 6
- Flammability:** Euroclass Bfl-s1



armour

armour offers the ultimate in entrance performance with its combination of absorber and scraper yarns, which protect internal floor finishes by trapping up to 90% of dirt and moisture, tracked in by foot and wheel traffic. The combination of plain, stripe and block stripes in the key blending colours of dark grey, warm grey and blue, will coordinate beautifully with any flooring design scheme. Armour is ideal for primary and secondary entrance areas, as well as lobby, lift areas and staircases.



1440 grey 1428 blue 1439 brown 1446 fawn 1436 green

Specification

Product Description: Fibre Bonded
Pile Yarn Description: 100% Polypropylene
Roll Length: 30m
Roll Width: 2m
Total Thickness: 10.0 mm +/-10%
Total Weight: 1490 g/m² +/-10%
Colour Fastness To Light: Minimum grade 6
Flammability: Euroclass EF-s1

7700 grimebuster

7700 grimebuster is a heavy contract ribbed fibre bonded carpet. It is ideal for withstanding heavy footfall environments and creating an effective dirt barrier for busy entrances, which lead directly from outside environments.



1640 newmarket grey 1628 haydock blue 1639 goodwood brown 1646 wincanton fawn 1636 curragh green

Specification

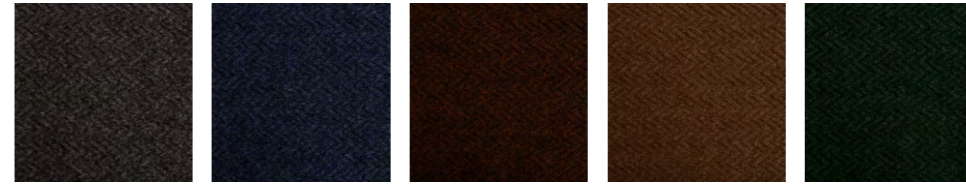
Product Description: Fibre Bonded
Pile Yarn Description: 100% Polypropylene
Tile Dimensions: 50 cm x 50 cm
Total Thickness: 12.0 mm
Pile Weight: 1170 g/m²
Total Weight: 4300 g/m²
Colour Fastness To Light: Minimum grade 6
Flammability: Euroclass BF-s1

grimebuster 50

grimebuster 50 is a heavy contract fibre bonded carpet tile with a deep diagonal rib surface.

It is ideal for withstanding heavy footfall environments and creating an effective dirt barrier for busy entrances, which lead directly from outside environments.





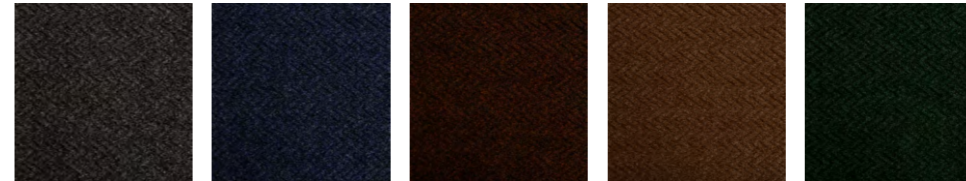
7840 charcoal 7828 blue 7839 brown 7846 fawn 7836 green

Specification

Product Description: Fibre Bonded
Pile Yarn Description: 100% Polypropylene
Roll Length: 30m
Roll Width: 2m
Total Thickness: 10.0 mm +/-10%
Total Weight: 1490 g/m² +/-10%
Colour Fastness To Light: Minimum grade 6
Flammability: Euroclass EF-s1

7800 chevrolay

7700 chevrolay is a heavy contract chevron ribbed fibre bonded carpet. It is ideal for withstanding heavy footfall environments and creating an effective dirt barrier for busy entrances, which lead directly from outside environments.



6240 alpha grey 6228 beta blue 6239 theta brown 6246 kappa fawn 6236 gamma green

Specification

Product Description: Fibre Bonded
Pile Yarn Description: 100% Polypropylene
Tile Dimensions: 50 cm x 50 cm
Total Thickness: 12.0 mm
Pile Weight: 1490 g/m²
Total Weight: 4300 g/m²
Colour Fastness To Light: Minimum grade 6
Flammability: Euroclass BF-s1



chevrolay 50

chevrolay 50 is a heavy contract chevron ribbed fibre bonded tile with deep chevron design.

It is ideal for withstanding heavy footfall environments and creating an effective dirt barrier for busy entrances, which lead directly from outside environments.

characteristics of the products

Name	Dimensions Rolls (R) / Tiles (T)	Product Type	Pile Description	Carpet Pile Weight g/m ²	Tile Total Weight g/m ²	Carpet Pile Height mm	Tile Total Thickness mm	Number of tufts x/m ²	Backing	Flammability EN13501	Impact Noise	Number of SKUs	Suitable for Underfloor Heating	Body Voltage kV	Wear Classification	Colour Fastness to Light BS EN ISO 105	Slip Resistant	Castor Chair EN985
Arctic	T 50cm x 50cm P 25 cm x 100 cm	Multilevel Loop	100% Nylon 6 carbon negative recycled yarn	624	4024	4.5	7	226,771	BioBase™	Bfl-S1	26 dB	12	Yes below 27°	<2.0	Class 33	>6	NPD	Pass
Vibe	T 50cm x 50cm	Multilevel Loop	100% Nylon 6 (PA)	774	4180	5	7.5	250,393	Accummen®	Bfl-S1	25 dB	12	Yes below 27°	<2.0	Class 33	>6	NPD	Pass
Dapple	T 50cm x 50cm	Multilevel Loop	100% Nylon 6 (PA)	678	4100	5.2	7	236,220	Accummen®	Bfl-S1	24 dB	12	Yes below 27°	<2.0	Class 33	>6	NPD	Pass
Tiltturn	T 50cm x 50cm	Multilevel Loop	100% Nylon 6 (PA)	770	4200	5	7.5	259,842	Accummen®	Bfl-S1	25 dB	12	Yes below 27°	<2.0	Class 33	>6	NPD	Pass
Balance Grade	T 50cm x 50cm	Multilevel Loop	100% Nylon 6 (PA)	628	4028	4.5	7	226,771	Accummen®	Bfl-S1	23 dB	12	Yes below 27°	<2.0	Class 33	>6	NPD	Pass
Balance Grid	T 50cm x 50cm	Multilevel Loop	100% Nylon 6 (PA)	628	4028	4.5	7	226,771	Accummen®	Bfl-S1	23 dB	12	Yes below 27°	<2.0	Class 33	>6	NPD	Pass
Balance Ground	T 50cm x 50cm	Multilevel Loop	100% Nylon 6 (PA)	628	4028	4.5	7	226,771	Accummen®	Bfl-S1	23 dB	12	Yes below 27°	<2.0	Class 33	>6	NPD	Pass
Alaska	T 50cm x 50cm	Multilevel Loop	100% Econyl Nylon(PA)	800	4200	5	7.5	226,771	Accummen®	Bfl-S1	22 dB	12	Yes below 27°	<2.0	Class 33	>6	NPD	Pass
Rainfall	T 50cm x 50cm	Multilevel Loop	100% Econyl Nylon(PA)	910	4300	5	7.5	236,220	Accummen®	Bfl-S1	24 dB	12	Yes below 27°	<2.0	Class 33	>6	NPD	Pass
Osaka	T 50cm x 50cm	Multilevel Loop	100% Nylon 6.6 (PA)	795	4200	5	7.5	226,771	Accummen®	Bfl-S1	22 dB	12	Yes below 27°	<2.0	Class 33	>6	NPD	Pass
Hadron	T 50cm x 50cm	Textured Loop	100% Nylon 6.6 (PA)	800	4240	3.5	6.5	177,165	Accummen®	Bfl-S1	23 dB	17	Yes below 27°	<2.0	Class 33	>6	NPD	Pass
Go To	T 50cm x 50cm	Level Loop	100% Nylon(PA)	500	4810	3.0	5.5	196,850	Accummen®	Bfl-S1	20 dB	20	Yes below 27°	<2.0	Class 33	>6	NPD	Pass
Tivoli	T 50cm x 50cm P 25 cm x 100 cm	Level Loop	100% Nylon(PA)	600	4050	4	6.5	196,500	Accummen®	Bfl-S1	23 dB	38	Yes below 27°	<2.0	Class 33	>6	NPD	Pass
Tivoli Mist	T 50cm x 50cm P 25 cm x 100 cm	Level Loop	100% Nylon(PA)	600	4050	4	6.5	196,500	Accummen®	Bfl-S1	23 dB	38	Yes below 27°	<2.0	Class 33	>6	NPD	Pass
Lateral	T 50cm x 50cm	Structure Bonded	85%PP 15%PA	950	4200	5.5*	7.8	-	Accummen®	Bfl-S1	18 dB	18	Yes below 27°	<2.0	HC	>6	NPD	Pass
Code	T 50cm x 50cm	Structure Bonded	85%PP 15%PA	1000	4250	5.5*	8	-	Accummen®	Bfl-S1	17 dB	11	Yes below 27°	<2.0	HC	>6	NPD	Pass
Origin	T 50cm x 50cm	Cut Pile	100% Econyl Nylon(PA)	1300	4550	7	9.5	165,354	Accummen®	Bfl-S1	28 dB	10	Yes below 27°	<2.0	Class 33	>6	NPD	Pass
4200 Sidewalk	R 2m x 30m	Fibre Bonded Sheet	85%PP 15%PA	950	-	6	-	-	Uniform	Efl-S1	18 dB	32	Yes below 27°	<2.0	HC	>6	NPD	Pass
4200 SidewalkFR	R 2m x 30m	Fibre Bonded Sheet	85%PP 15%PA	950	-	6	-	-	Uniform	Cfl-S1	18 dB	32	Yes below 27°	<2.0	HC	>6	NPD	Pass
Cordiale	T 50cm x 50cm	Fibre Bonded Tile	85%PP 15%PA	950	4200	6	7.8	-	Accummen®	Bfl-S1	18 dB	32	Yes below 27°	<2.0	HC	>6	NPD	Pass
4400 Broadway	R 2m x 30m	Fibre Bonded Sheet	85%PP 15%PA	975	-	6.5	-	-	Uniform	Efl-S1	19 dB	32	Yes below 27°	<2.0	HC	>6	NPD	Pass
4400 BroadwayFR	R 2m x 30m	Fibre Bonded Sheet	85%PP 15%PA	975	-	6.5	-	-	Uniform	Cfl-S1	19 dB	32	Yes below 27°	<2.0	HC	>6	NPD	Pass
Academy	T 50cm x 50cm	Fibre Bonded Tile	85%PP 15%PA	975	4200	6.5	7.8	-	Accummen®	Bfl-S1	21 dB	32	Yes below 27°	<2.0	HC	>6	NPD	Pass
5500 Sheet	R 2m x 30m	Fibre Bonded Sheet	85%PP 15%PA	1150	-	6.5	-	-	Uniform	Efl-S1	21 dB	18	Yes below 27°	<2.0	HC	>6	NPD	Pass
Velour Excel	T 50cm x 50cm	Fibre Bonded Tile	85%PP 15%PA	1200	4900	8	10	-	Accummen®	Bfl-S1	21 dB	18	Yes below 27°	<2.0	HC	>6	NPD	Pass

entrance matting

Name	Dimensions Rolls (R) / Tiles (T)	Product Type	Pile Description	Carpet Pile Weight g/m ²	Total Weight g/m ²	Thickness mm	Backing	Flammability EN13501	Number of SKUs	Wear Classification	Colour Fastness to Light BS EN ISO 105	Slip Resistant
Armour	T 50cm x 50cm	Cut Pile	100%PA	920	4500	10	Accummen®	Bfl-S1	6	Class 33	>6	DS
7700 Grimebuster	R 2m x 30m	Fibre Bonded Sheet	100% PP	-	1490	10	Uniform	Efl-S1	5	HC	>6	NPD
Grimebuster 50	T 50cm x 50cm	Fibre Bonded Tile	100% PP	1490	4300	12	Accummen®	Bfl-S1	5	HC	>6	NPD
7800 Chevrolay	R 2m x 30m	Fibre Bonded Sheet	100% PP	-	1490	10	Uniform	Efl-S1	5	HC	>6	NPD
Chevrolay 50	T 50cm x 50cm	Fibre Bonded Tile	100% PP	1490	4300	12	Accummen®	Bfl-S1	5	HC	>6	NPD

Appendix

7	arctic	39	lateral
9	vibe	41	code
11	dapple	43	origin
13	tiltturn	45	4200 sidewalk
15	balance grade	45	cordiale
17	balance grid	47	4400 broadway
19	balance ground	47	academy
21	rainfall	49	5500 luxury
23	osaka	49	velour excel
25	alaska	51	armour
27	hadron	53	7700 grimebuster
29	go to	53	grimebuster 50
31	tivoli mist	55	7800 chevrolay
35	tivoli tile	55	chevrolay 50
37	tivoli plank		



Burmatex®

MANUFACTURERS OF CREATIVE FLOORING 

Head Office

Victoria Mills, The Green
Ossett
West Yorkshire
WF5 0AN
United Kingdom

Tel: +44 (0) 1924 262525
Fax: +44 (0) 1924 280033
Email: projects@burmatex.co.uk
Web: www.burmatex.co.uk

International Enquires

international@burmatex.co.uk

Eastern Europe Office

Burmatex
Andersia Business Centre
Plac Andersa 7
61-894 Poznań, Poland

Tel: + 48 61 668 3883
Mob: + 48 603 548 074
Mob: + 48 696 057 065
email: biuro@burmatex.pl

Plank installation methods

Monolithic



Half Drop



Random Drop



Herringbone



Tile installation methods

Quarter Turn



Monolithic



Random



Brick



Half Drop



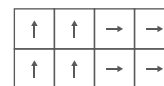
Alternate rows rotated 180°



Alternate tiles rotated 180°



Large Quarter Turn



Parquet

