

TOUCH DOWN

The softest landing

#SUPERSOFTCARPETS

#100%ECCELENA SILK #HEAVYDOMESTIC

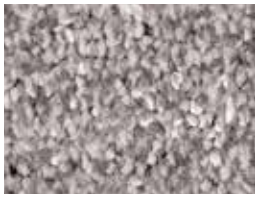
#EASYCARE #BLEACHCLEANABLE

#FADERESISTANT#STAINRESISTANT



SERENADE RUSTIQUE

Luxury saxony with exceptional touch and beautiful finish



▲ SMB: LSRU.0860 | 400 & 500 cm



▲ SMB: LSRU.0433 | 400 & 500 cm



▲ SMB: LSRU.0253 | 400 & 500 cm



▲ SMB: LSRU.0233 | 400 & 500 cm



▲ SMB: LSRU.0273 | 400 & 500 cm



▲ SMB: LSRU.0423 | 400 & 500 cm



▲ SMB: LSRU.0263 | 400 & 500 cm



▲ SMB: LSRU.0843 | 400 & 500 cm



▲ SMB: LSRU.0850 | 400 & 500 cm



▲ SMB: LSRU.0830 | 400 & 500 cm



▲ SMB: LSRU.0823 | 400 & 500 cm



▲ SMB: LSRU.0230 | 400 & 500 cm

TOUCH DOWN

The softest landing

#SUPERSOFTCARPETS

#100%ECCELENA SILK #HEAVYDOMESTIC

#EASycARE #BLEACHCLEANABLE

#FADERESISTANT #STAINRESISTANT

SERENADE RUSTIQUE

Luxury saxony with exceptional touch and beautiful finish

<p>Fabricagemethode Technique de fabrication Manufacturing process Herstellungsverfahren Tecnica di fabbricazione</p> <p>1/8" Cut Pile</p>	<p>Poolsamenstelling Nature du velours Pile composition Polmaterial Composizione felpa</p> <p>PP</p>	<p>Tuftdoek Premier dossier Primary backing Trägermaterial Tela di supporto</p> <p>woven</p>	<p>Rugtype Envers Secondary backing Rücken Sottofondo</p> <p>SMB</p>
<p>Totale dikte Hauteur totale Total height Gesamthöhe Spessore totale</p> <p>± 16 mm</p>	<p>Nuttige poolhoogte Hauteur de velours utile Effective pile height Tatsächliche Florhöhe Spessore felpa utile</p> <p>± 13,5 mm</p>	<p>Breedte Largeur Width Breite Altezza</p> <p>± 400 & 500 cm</p>	<p>Aantal noppen/m² Nombre de points/m² Number of knots/sqm Noppenzahl/m² Numero di punti/mq</p> <p>± 122.850</p>
<p>Poolinzetgewicht/m² Poids mis en oeuvre/m² Pile weight/sqm Poleinsatzgewicht/m² Peso felpa/mq</p> <p>± 2.040 gr</p>	<p>Totaal gewicht/m² Poids total/m² Total weight/sqm Poleinsatzgewicht/m² Peso totale/mq</p> <p>± 2.890 gr</p>	<p>EN 13501-1 Brandgedrag Comportement au feu Fire behaviour Brennverhalten Reazione al fuoco</p> <p>E_{fl}</p>	<p>EN 1307-2004 Classificatie Classification Classification Klassifizierung Classificazione</p> <p>Class 21 Domestic Moderate</p>
<p>TOG rating</p> <p>± 2,1</p>	<p>ISO 140/8 Contactgeluidsisolatie Isolation aux bruits d'impact Impact sound insulation Trittschallverbesserungsmaß Miglioramento acustico</p> <p>± 25</p>	<p>DIN 52612 Warmtedoorlaatweerstand Résistivité thermique Thermal retention Wärmedurchlaßwiderstand Resistenza termica</p> <p>± 0,21 m²/kW</p>	<p>ISO 105 B02 2000 Lichtechtheid Solidité à la lumière Lightfastness Lichtechtheid Solidità colori alla luce</p> <p>≥ 5</p>
<p>ISO 105 E01 2002 Waterrechtheid verkleuring Solidité à l'eau changement couleur Waterfastness change in colour Wasserechtheit Änderung der Farbe Solidità colori all'acqua cambio colore</p> <p>≥ 3-4</p>	<p>ISO 105 E01 2002 Waterrechtheid uitbloeding Solidité à l'eau dégorgeement Waterfastness staining Wasserechtheit anbluten Solidità colori all'acqua sfumatura colore</p> <p>≥ 2-3</p>	<p>ISO 105 X12 2001 Wrijfechtheid droog Solidité au frottement sec Rubbingfastness dry Reibungechtheit trocken Solidità colori allo sfregamento a secco</p> <p>≥ 3-4</p>	<p>ISO 105 X12 2001 Wrijfechtheid nat Solidité au frottement humide Rubbingfastness wet Reibungechtheit nass Solidità colori allo sfregamento umido</p> <p>≥ 3</p>

(±) These details are approximate. Complete specification details and associated certificates together with tolerances applying to the above can be provided upon request. We reserve the right to improve technical specifications without prior notice. Due to method of manufacture perfect pattern and/or colour matching cannot be guaranteed. The natural characteristics of woollen products result in shade variations & slight blemishes. They cannot be avoided without destroying the very nature of the product itself. In cut-pile carpeting, in rare cases, shading/pile reversal may occur without affecting its fitness for use. Shading/pile reversal can not be considered as a manufacturing or a material defect and will not affect the durability of the carpet. For other languages see: www.lano.com

