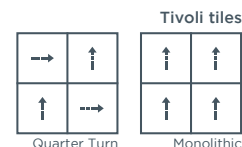
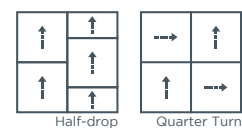
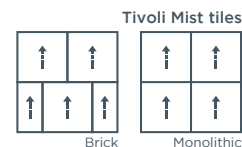


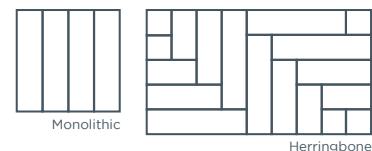
# technical specifications

<b>Product Name</b>	Tivoli Mist
<b>Product Description</b>	Low Level Loop
<b>Pile Yarn Description</b>	100% Solution Dyed Nylon (Polyamide-PA)
<b>Tile Dimensions</b>	50 cm x 50 cm, 25 cm x 100 cm (planks)
<b>Pile Yarn Weight</b>	600g/m <sup>2</sup>
<b>Total Weight</b>	4050g/m <sup>2</sup>
<b>Pile Height</b>	4.0mm
<b>Total Thickness</b>	6.5mm
<b>Gauge/ends per 10cm</b>	1/10 <sup>th</sup> gauge 50 stitches
<b>Tufts per m2 / Pile Density</b>	196,500/m <sup>2</sup>
<b>Backing Description</b>	Accummen™, 75% recycled
<b>Wear Classification</b>	BS EN 1307 Heavy Commercial Use Class 33
<b>Luxury Rating Class</b>	LC2
<b>Flammability</b>	Euroclass Bfl-s1
<b>Thermal Resistance</b>	Tog Rating 0.39; ISO 8302: 0.04 m <sup>2</sup> K/W
<b>Castor Chair Rating</b>	BS EN 985 Pass - suitable for continuous use
<b>Hexapod</b>	BS ISO 10361: Method B:2000 3 to 4
<b>Static Loading</b>	BS 4939: 1987 (2003) Recovery >80% (24hrs)
<b>Dynamic Loading</b>	BS ISO 2094: 1999 (2005) Loss <20% (1000 impacts)
<b>Body Voltage Test</b>	BS ISO 6356:2000 <2kV
<b>Colour Fastness To Light</b>	BS EN ISO 105 - B02 Minimum Grade 6
<b>Colour Fastness To Shampoo</b>	BS 1006:UK-TB: 1990 Minimum Grade 4-5
<b>Sound Absorption Coefficient</b>	BS EN 354:2003
<b>Reduction in Impact Noise</b>	BS EN ISO 10140-3:2010 23dB
<b>Reduction in Impact Noise at 1000Hz</b>	BS EN ISO 10140-3:2010 35.6dB
<b>Number Of Tiles/Planks Per Box</b>	20 (5m <sup>2</sup> )

For best results we recommend\*



For best carpet plank installation results we recommend\*



\*All tiles within these designs are unique and any linear aspects may not match from one tile to the next



This floor covering was made with renewable electricity



Certificate Number FM01440  
BS EN ISO 9001:2015



Statement on level of emission of volatile substances in indoor air posing a toxic threat during inhaling - on a scale from A+ (very low-emission) to C (high-emission)



The Building Information Foundation, Finland. Certified building materials with low emission class M1



Environmental Product Declaration by independent third-party verification of the declaration and data, according to ISO 14025:2006

## environmental information

- burmatex® products are EPD verified by an independent third-party verification of the declaration and data, according to ISO 14025:2006. For specific ratings, please refer to [www.environdec.com](http://www.environdec.com)
- burmatex® products qualify for SKA as they achieve one or more requested criteria
- burmatex® products can contribute to the WELL Building Standard™, which focuses on the people and healthy workspaces
- All burmatex® carpet/carpet tile/carpet plank ranges are made at its single UK manufacturing site
- Wherever possible, raw materials including yarn/fibre are sourced locally i.e. within 20 miles
- Over 75% of burmatex® Accummen™ backing comes from recycled materials
- Continuous assessment and improvement of manufacturing process to minimise use of raw materials/power
- All manufacturing waste is recycled and all electricity used is from renewable resources
- All burmatex® products are heavy contract with a 10 year guarantee for maximum useful life
- Certified, Class A+: very-low VOC Emission

**LEED® v4** - Burmatex products can contribute towards satisfying the following credits for LEED v4: NC-v4/CI-v4 MRC2/MRC3 (Building product disclosure and optimization - environmental product declarations), MRC3/MRC4 (Building product disclosure and optimization - sourcing of raw materials), EQc1 (Enhanced indoor air quality strategies), EQc2 (Low-emitting materials), EQc6 (Interior lighting - Option 2. Lighting quality (E - H)) and EQc9 (Acoustic Performance). Products are not reviewed under LEED. LEED credit requirements cover the performance of materials in aggregate, not the performance of individual products or brands. For more information on LEED, visit [www.usgbc.org/contact](http://www.usgbc.org/contact)

Burmatex Ltd  
Victoria Mills, The Green  
Osssett, West Yorkshire  
WF5 0AN  
United Kingdom

T +44 (0) 1924 262 525  
F +44 (0) 1924 280 033  
UK email: [projects@burmatex.co.uk](mailto:projects@burmatex.co.uk)  
International email: [international@burmatex.co.uk](mailto:international@burmatex.co.uk)  
[www.burmatex.co.uk](http://www.burmatex.co.uk)

Burmatex reserves the right to improve the specification of all products without prior notification. E&OE  
Burmatex carpets and carpet tiles should be installed and used in full accordance with instructions at [www.burmatex.co.uk](http://www.burmatex.co.uk) and recognised trade standards.  
Orders are subject to Burmatex terms and conditions of sale.  
See: [www.burmatex.co.uk](http://www.burmatex.co.uk)

## LRV values for **tivoli mist**

Product code tiles	Product code planks	Product colour name	CIE Y	CIE L
32701	32901	south beach	14.27	44.89
32702	32902	palm springs	8.81	35.77
32703	32903	ocean drive	13.11	41.16
32704	32904	havana town	8.80	36.93
32705	32905	turtle bay	10.17	37.42
32706	32906	bora bora	14.24	43.03
32707	32907	baffin island	7.06	31.17
32708	32908	bergen city	4.69	24.36
32710	32910	icelandic isle	13.21	45.01
32711	32911	nordic fjord	7.47	33.95
32712	32912	polar drift	9.99	37.50
32713	32913	galapagos bay	5.75	27.32